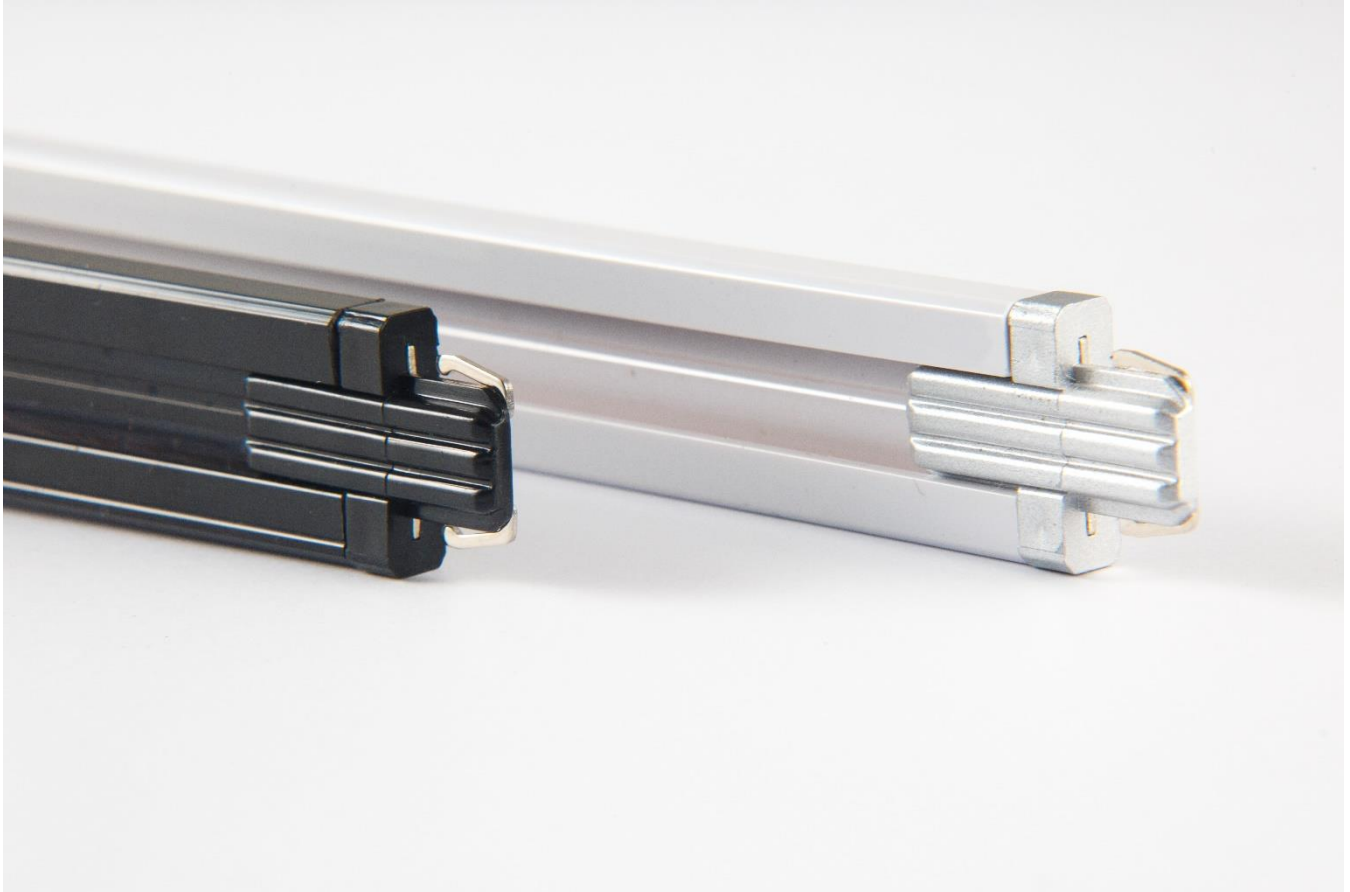
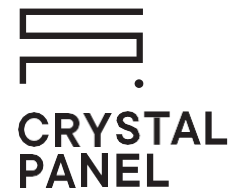


TECHNICAL DATA SHEET

POWER RAIL



Power Rail is a power installation component manufactured from aluminum and plastic with copper conductors integrated into the design for optimal power distribution.

Benefits of Power Rails:

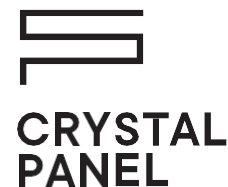
- reduced amount of wiring
- powering numerous Crystal Panel products with a single line
- a single power connection
 - easy to extend
- short installation time

SKL PLUS SP. Z O.O.
ul. Błażeja 70D / 61-608 Poznań, Poland
VAT No. / NIP: PL9721195168 / REGON: 301067675 / KRS: 0000334391
export@crystal-panel.com / mobile: +48 61 824 27 81 / www.crystal-panel.com



TECHNICAL DATA SHEET

POWER RAIL

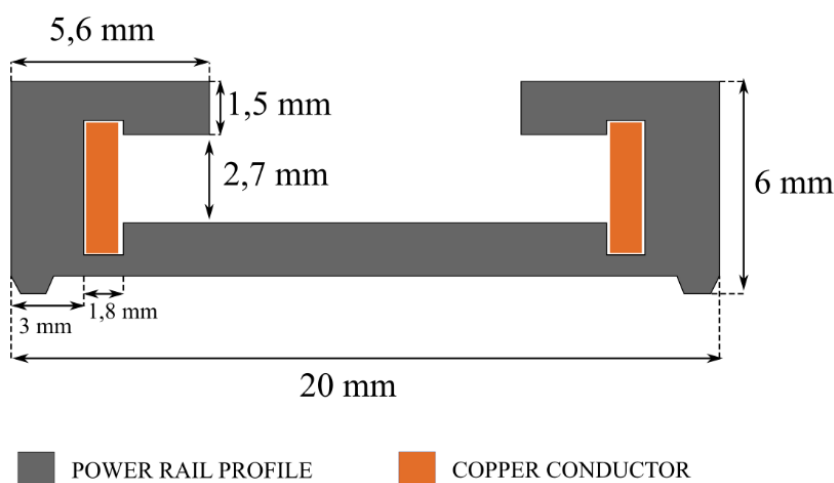


01 / COMPONENTS

a. Construction of the Power Rail:

- Power Rail – the profile features internal copper conductors.
- Power Rail Cap - quantity depending on project
- Power Rail Connector (if required) – quantity depending on project
- Power cable with Power Rail connector and 2.1/5.5 female sockets
- Power cable with Power Rail connector and tin-plated ends

TECHNICAL CROSSECTION POWER RAIL



b. Power Rail dimensions:

- Length: 2 m
- Height: 6 mm
- Width: 20 mm
- Weight: 0,17kg / running meter

c. Max. Length: - no limitation due to the possibility of connecting Power Rails

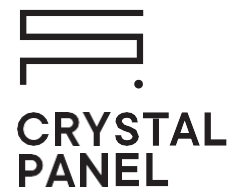
d. Profile Colours: black, white, silver (upon request)

CP-KP_Szynoprzewód_09_2024



TECHNICAL DATA SHEET

POWER RAIL



02 / ELECTRICAL PARAMETERS AND POWER SUPPLY CABLES

a. Power cable with Power Rail connector:

- with female 2.1./ 5.5 connector
- Voltage: 12V or 24V
- Max. power consumption: 310 W
- Length: 1000mm

b. Power cable with Power Rail connector and tin-plated ends:

- Can be connected to all backlighting components available in the Crystal Panel offer or to the power supply

03 / INSTALLATION METHODS

a. Recommended method of installation

- Foam adhesive tape
- Magnetic tape

CP-KP_Szynoprzewód_09_2024

