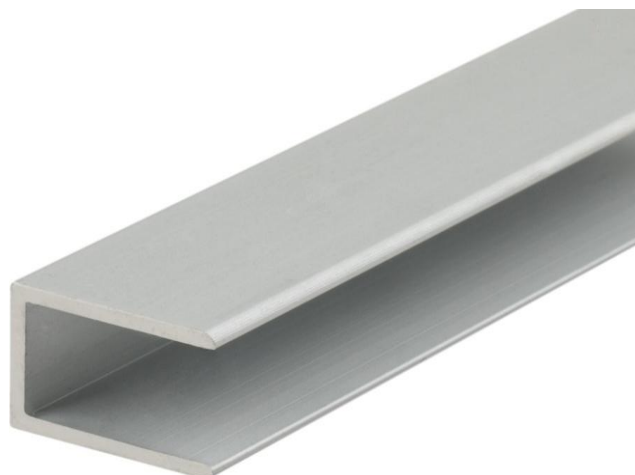
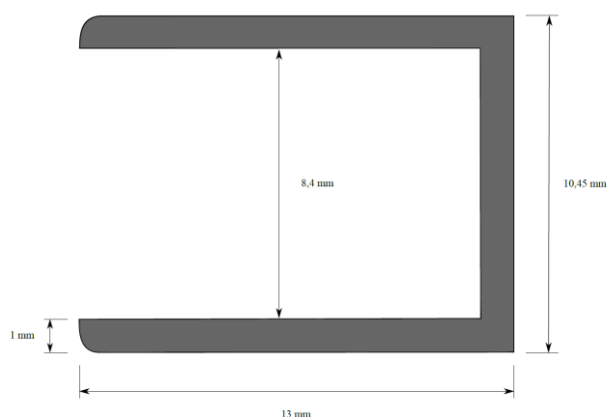
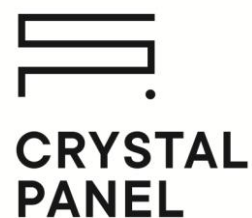


TECHNICAL DATA SHEET

PROFIL CPA29



Aluminium channel for frame construction with the possibility of using Crystal Panel Led.

Recommended max size [m] 1,5 x 0,8

Frame components

1. 1x CPA 29 – aluminium channel 10x7x1 mm
2. 4x corner for CPA29
3. CPL
4. Opal (optional)

Length [m] 3.05

Material Aluminium

Color Anodized

SKL PLUS SP. Z O.O.

ul. Błażeja 70E / 61-608 Poznań, Poland

VAT No. / NIP: PL9721195168 / REGON: 301067675 / KRS: 0000334391

export@crystal-panel.com / mobile: +48 61 824 27 81 / www.crystal-panel.com

